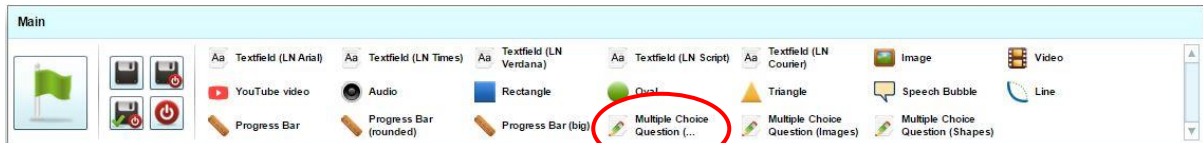
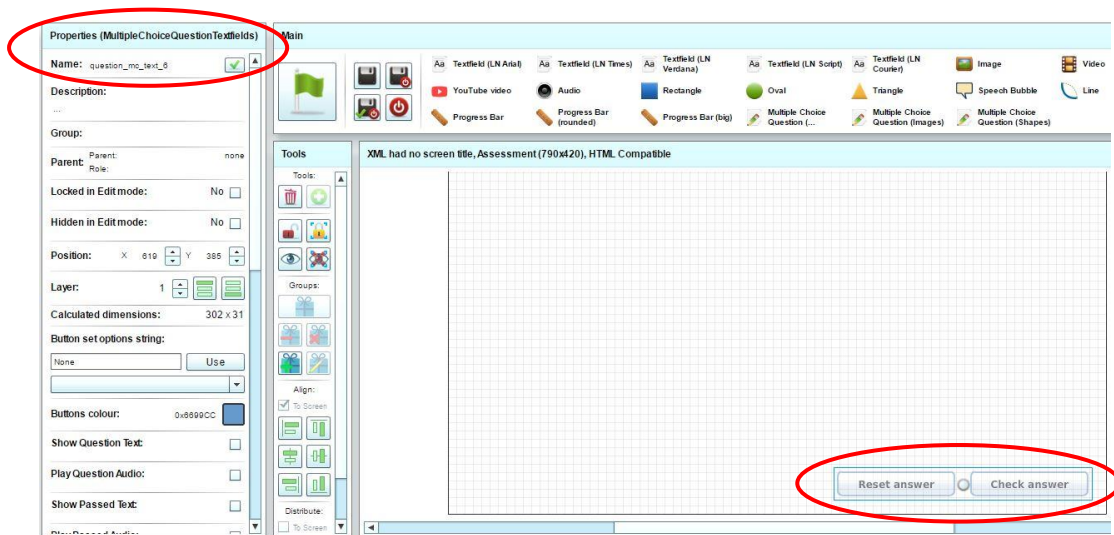


## Adding Multiple Choice Textfield Questions

To add a multiple choice question with textfields as the possible answers, click on the **Multiple Choice Question (selectable textfields)** button in the **Main** toolbar:



Once one of the multiple choice question assets has been selected, question buttons are added to the screen. Selecting these buttons show the multiple choice question properties in the Properties toolbar.

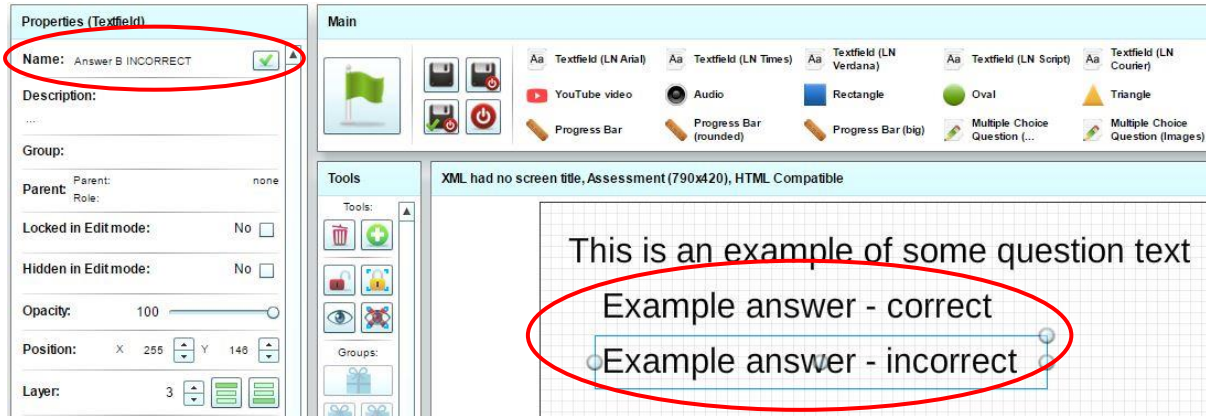


You then need to add your question text, using one of the available fonts from the Main toolbar.



Then add textfields for each of the potential answers.

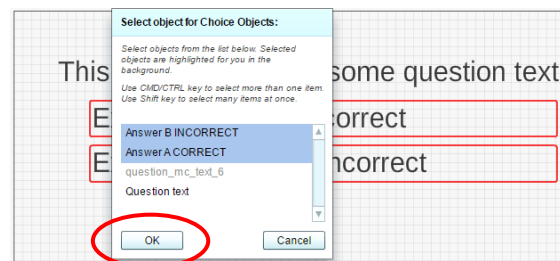
**Tip:** Label your question choice textfields appropriately for easy identification in the next step.



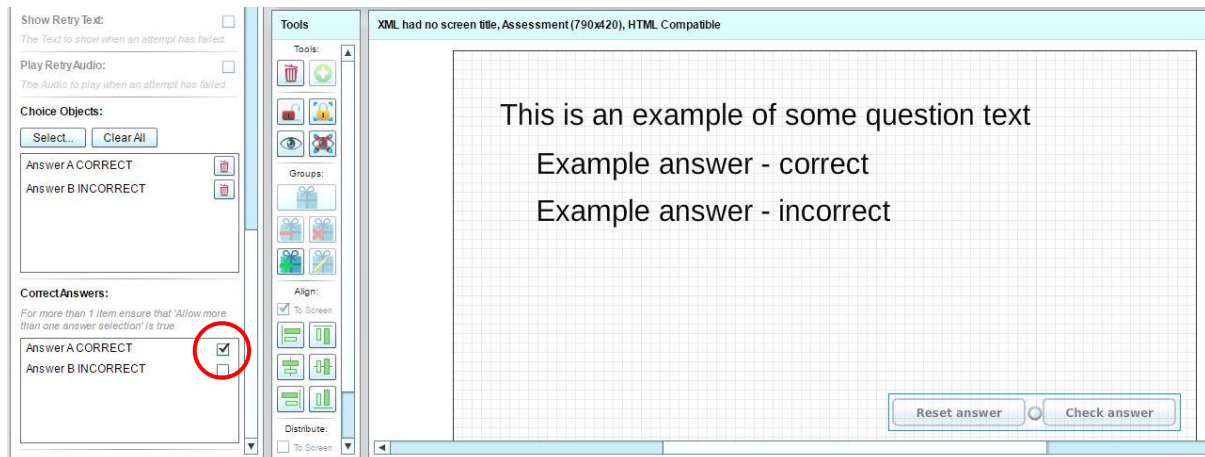
After selecting the learner buttons to access the question properties, scroll down in the **Properties** tool bar to assign Choice Objects by clicking **Select**.



A pop-up menu will appear to select the objects for question choices. Select the relevant objects and then click **OK**.



Now place a tick in the correct answer menu that appears at the bottom of the **Properties** toolbar.



**Tip:** If there is more than one correct answer, ensure that **the Allow more than one answer selection** option is ticked in the **Properties** toolbar.

