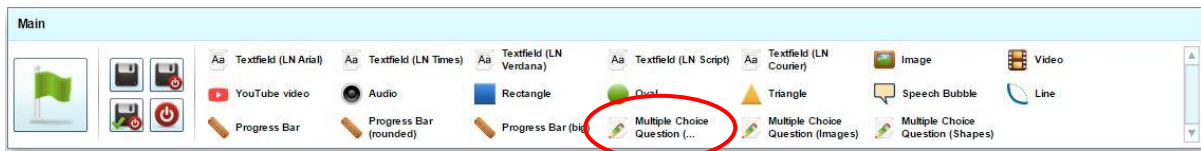
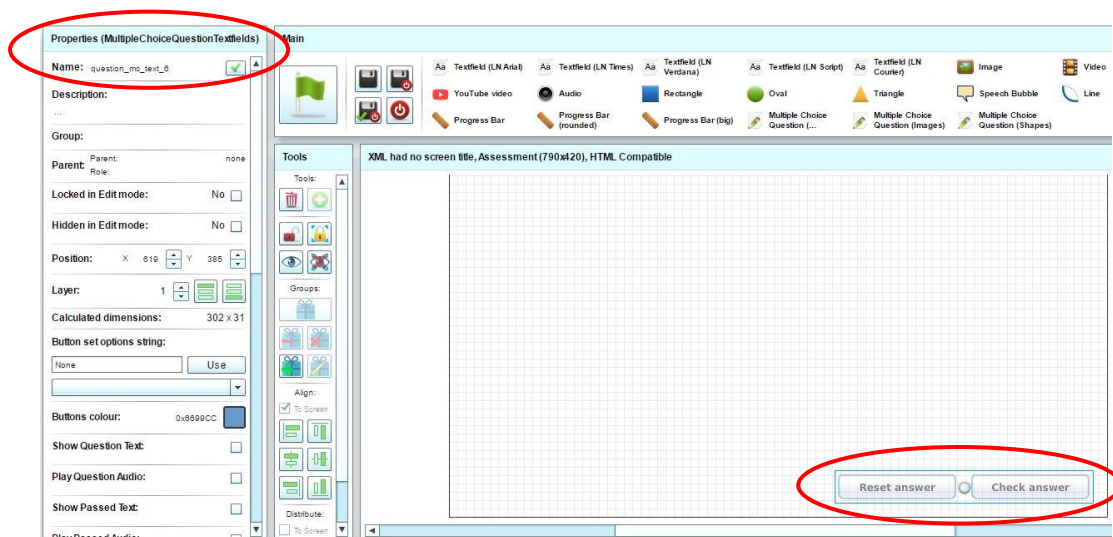


Adding Multiple Choice Image Questions

To add a multiple choice question with images as the possible answers, click on the **Multiple Choice Question (Images)** button in the **Main** toolbar:



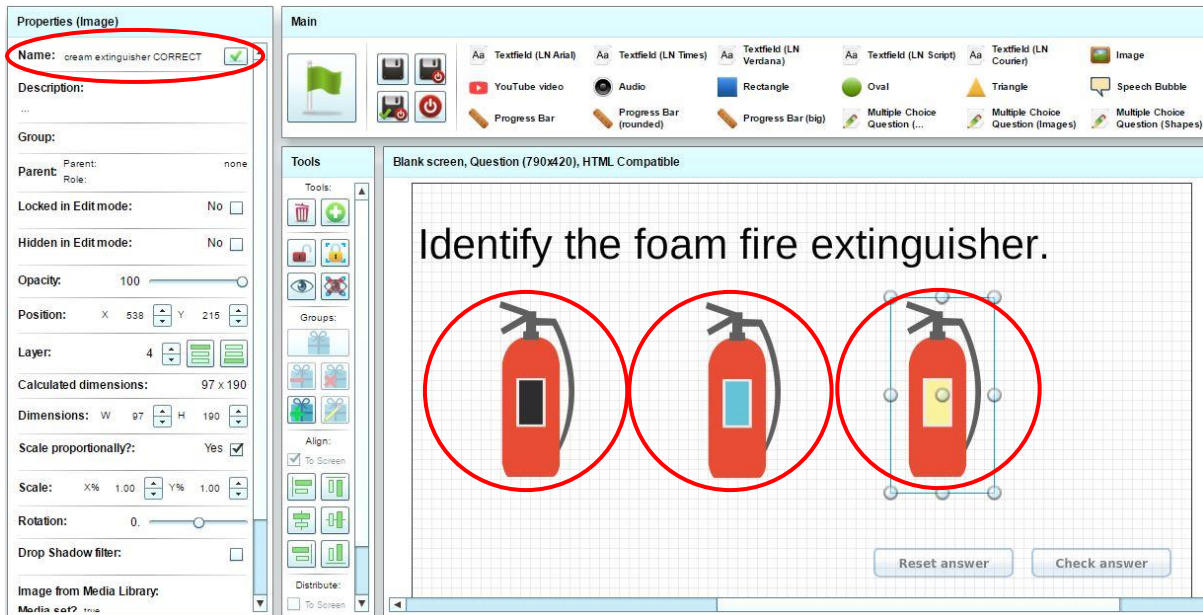
Once one of the multiple choice question assets has been selected, question buttons are added to the screen. Selecting these buttons show the multiple choice question properties in the **Properties** toolbar.



You then need to add your question text, using one of the available fonts from the **Main** toolbar.

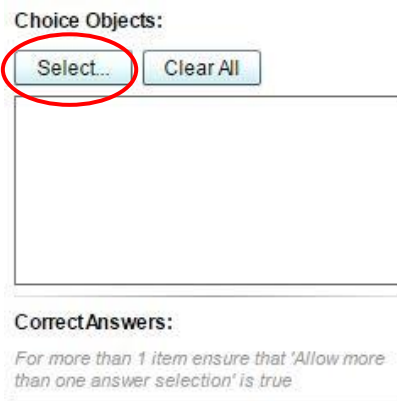


Then add the images required for each for each of the potential answers.

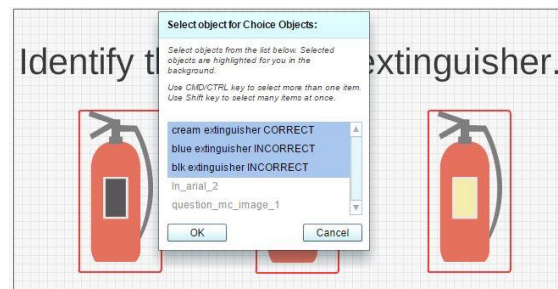


Tip: Label your question choice shapes appropriately for easy identification in the next step.

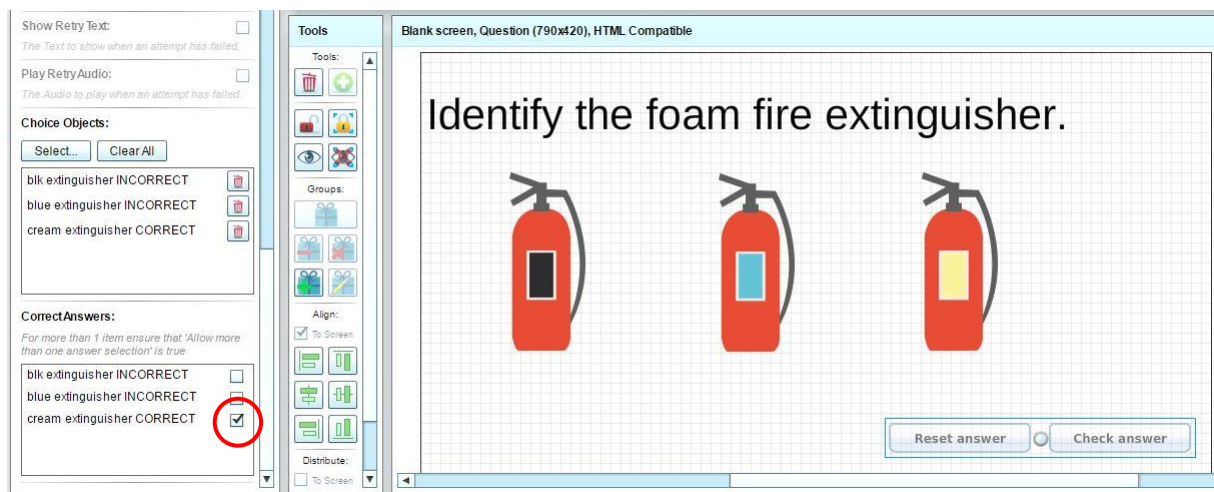
After selecting the learner buttons to access the question properties, scroll down in the **Properties** tool bar to assign Choice Objects by clicking **Select**.



A pop-up menu will appear to select the objects for question choices. Select the relevant objects and then click **OK**.



Now place a tick in the correct answer menu that appears at the bottom of the **Properties** toolbar.



Tip: If there is more than one correct answer, ensure that **the Allow more than one answer selection** option is ticked in the **Properties** toolbar.

