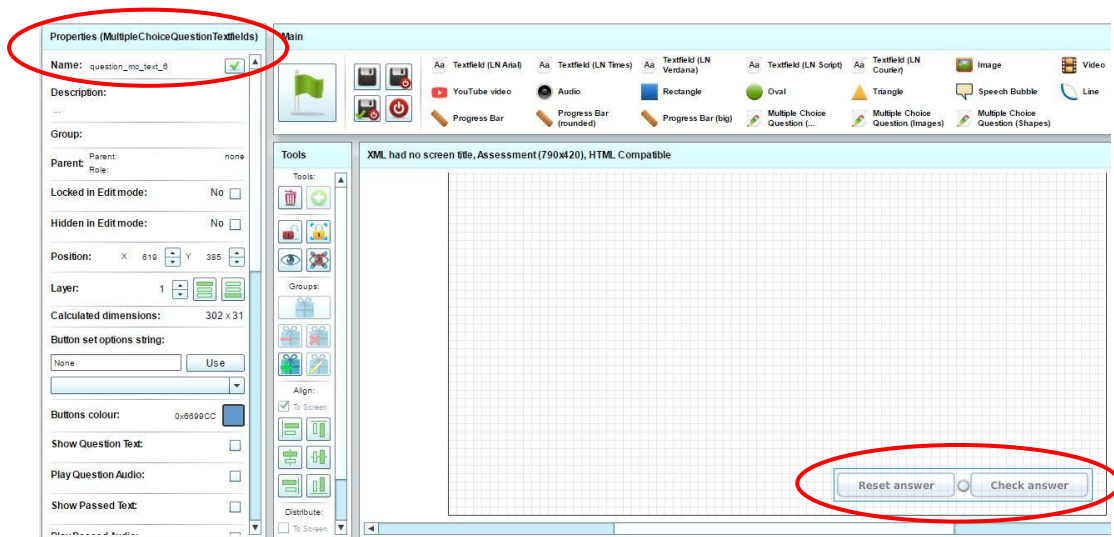


Adding Multiple Choice Shape Questions

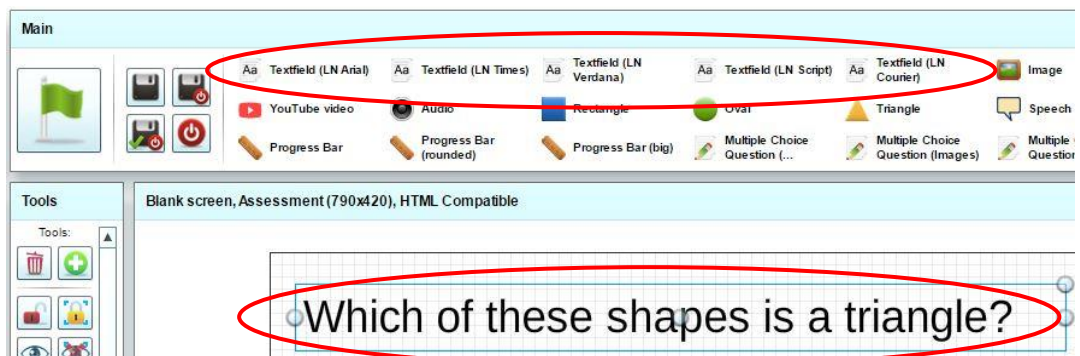
To add a multiple choice question with shapes as the possible answers, click on the **Multiple Choice Question (Shapes)** button in the **Main** toolbar:



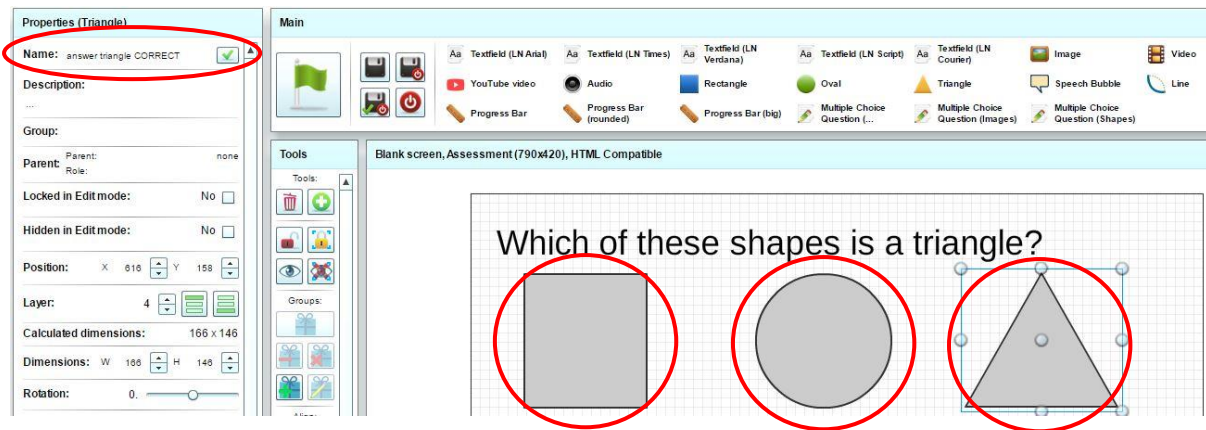
Once one of the multiple choice question assets has been selected, question buttons are added to the screen. Selecting these buttons show the multiple choice question properties in the **Properties** toolbar.



You then need to add your question text, using one of the available fonts from the **Main** toolbar.



Then add the shapes required for each for each of the potential answers.

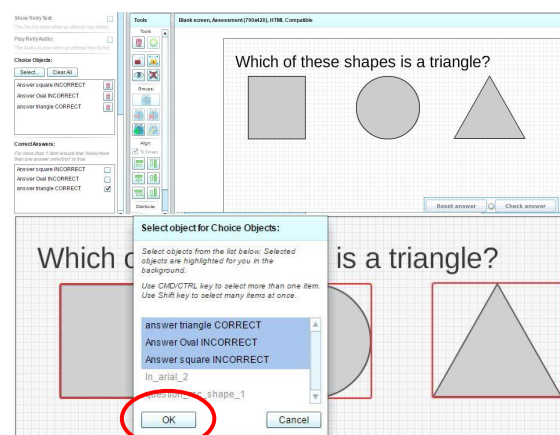


Tip: Label your question choice shapes appropriately for easy identification in the next step.

After selecting the learner buttons to access the question properties, scroll down in the **Properties** tool bar to assign Choice Objects by clicking **Select**.



A pop-up menu will appear to select the objects for question choices. Select the relevant objects and then click **OK**.



Now place a tick in the correct answer menu that appears at the bottom of the **Properties** toolbar.

The screenshot shows a question editor interface. On the left is the 'Properties' toolbar with sections for 'Show Retry Text', 'Play Retry Audio', 'Choice Objects', and 'Correct Answers'. The 'Correct Answers' section has three items: 'Answer square INCORRECT', 'Answer Oval INCORRECT', and 'answer triangle CORRECT'. The 'answer triangle CORRECT' checkbox is checked and circled in red. The main area shows a question on a grid background: 'Which of these shapes is a triangle?' with three options: a square, a circle, and a triangle. At the bottom right of the main area are 'Reset answer' and 'Check answer' buttons.

Tip: If there is more than one correct answer, ensure that **the Allow more than one answer selection** option is ticked in the **Properties** toolbar.

The screenshot shows a close-up of the 'Properties (MultipleChoiceQuestionTextfields)' toolbar. It lists several options with checkboxes: 'Play Passed Audio', 'Show Failed Text', 'Play Failed Audio', 'Draw choice rollovers: false', 'Allow more than one answer selection: true', and 'Show solution if failed: false'. The 'Allow more than one answer selection' option is set to 'true' and its checkbox is checked and circled in red.